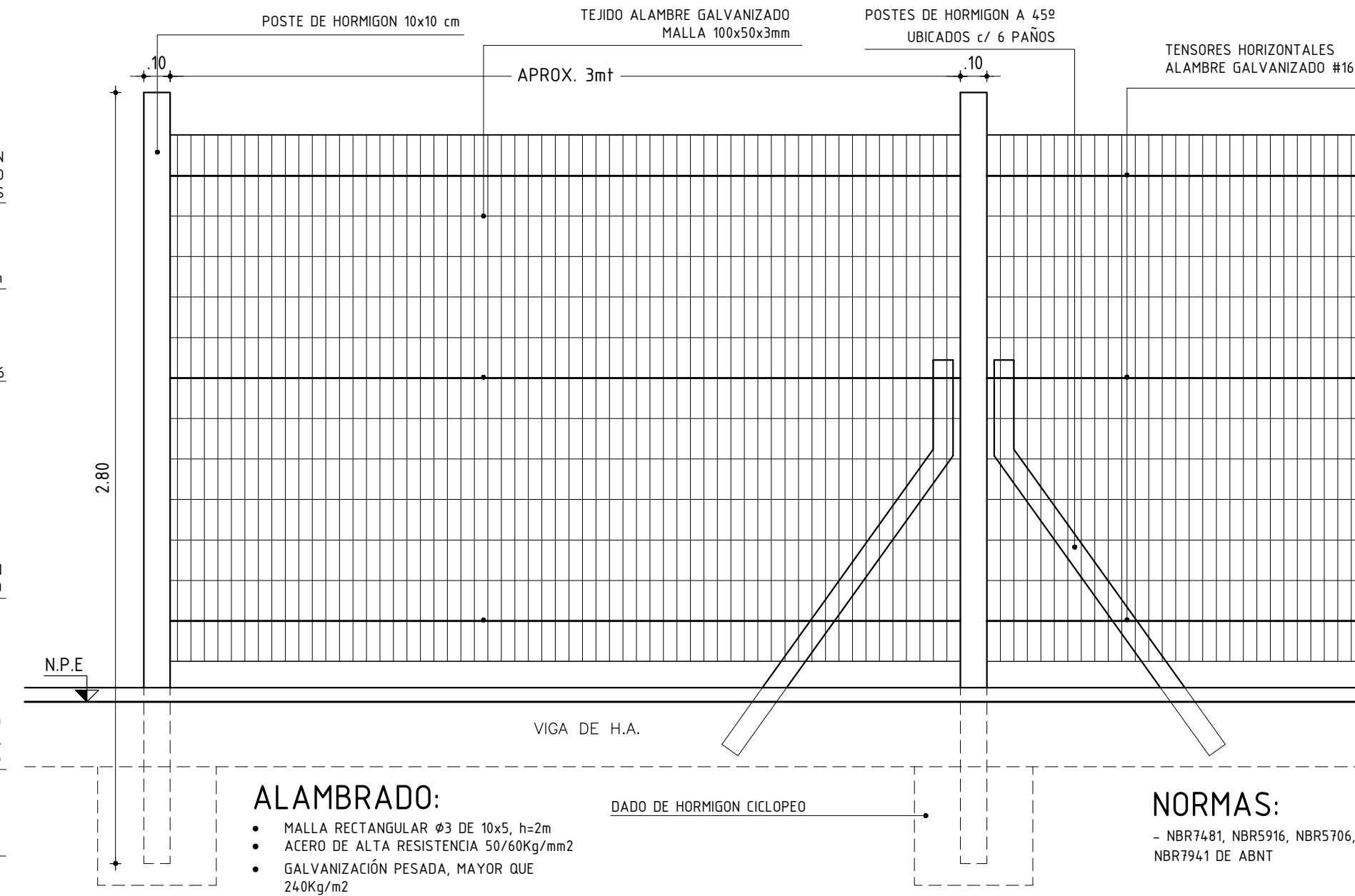
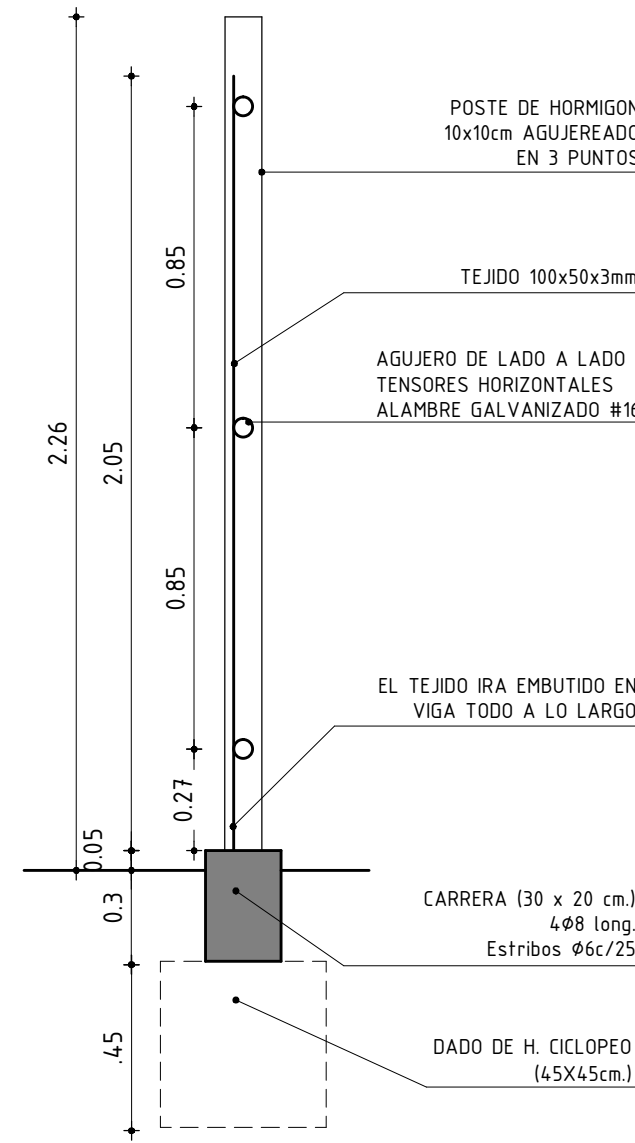
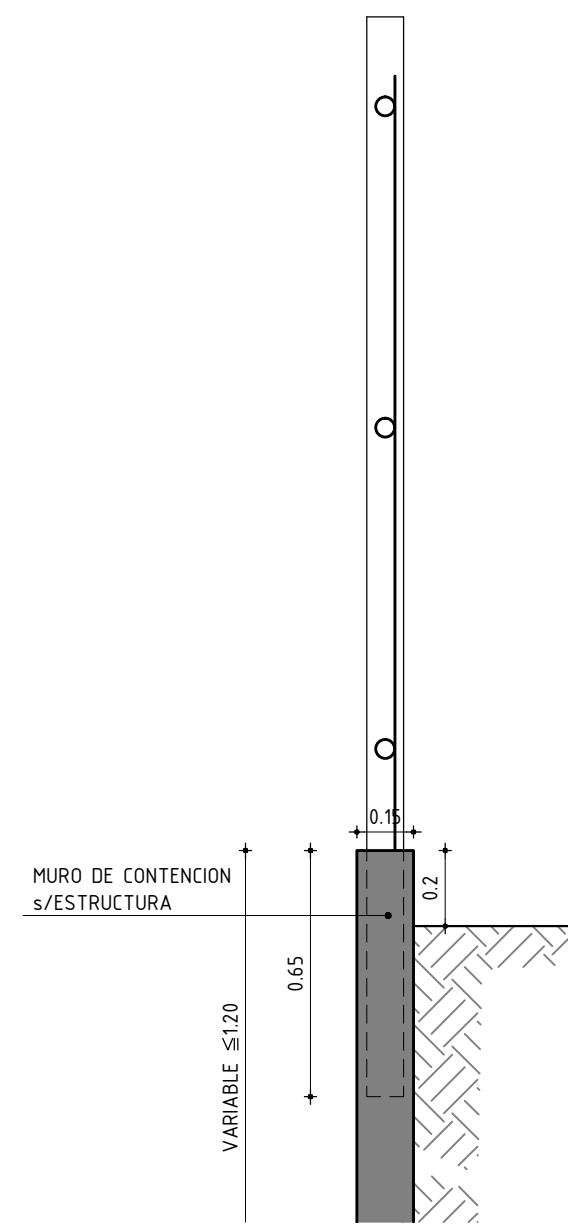
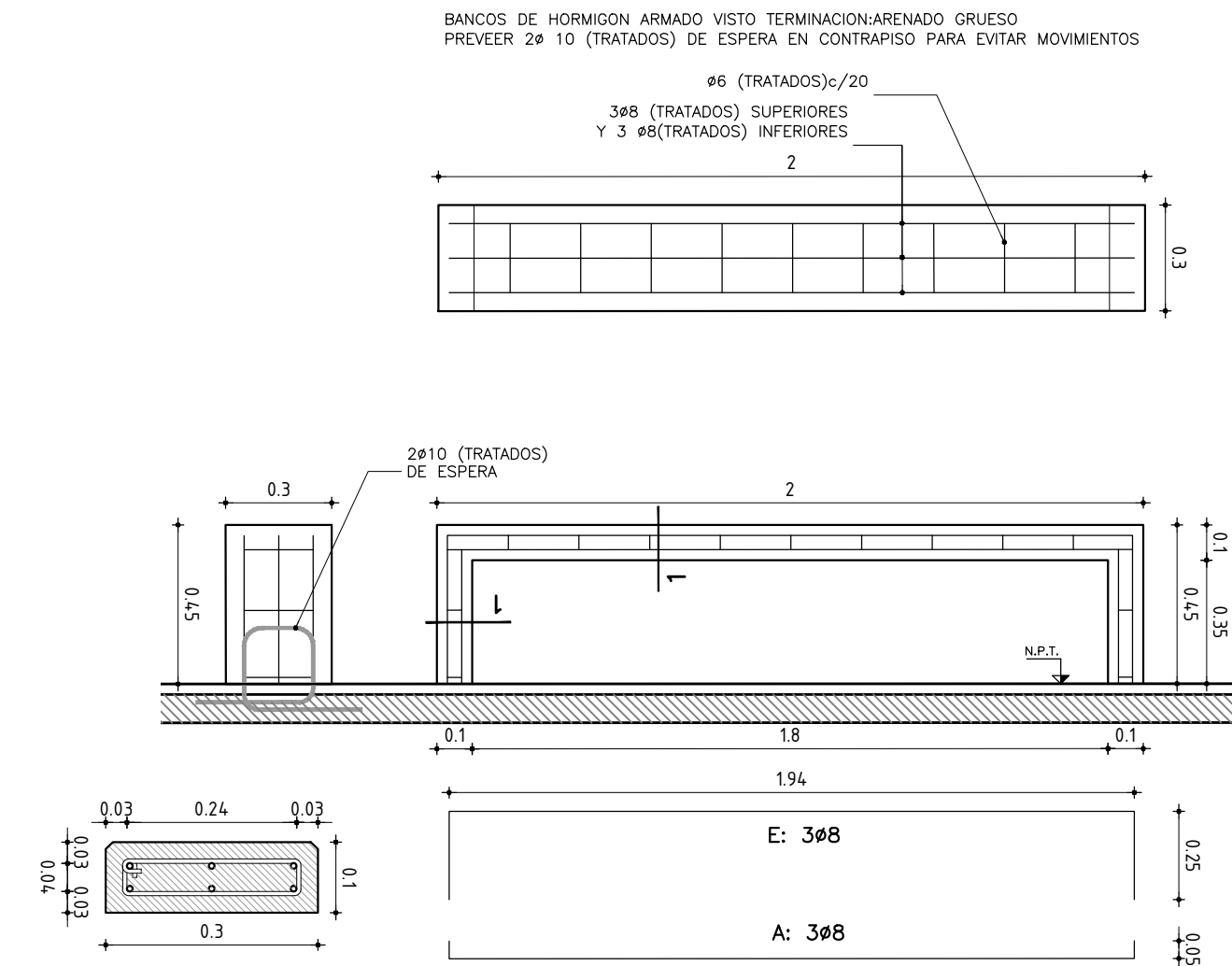


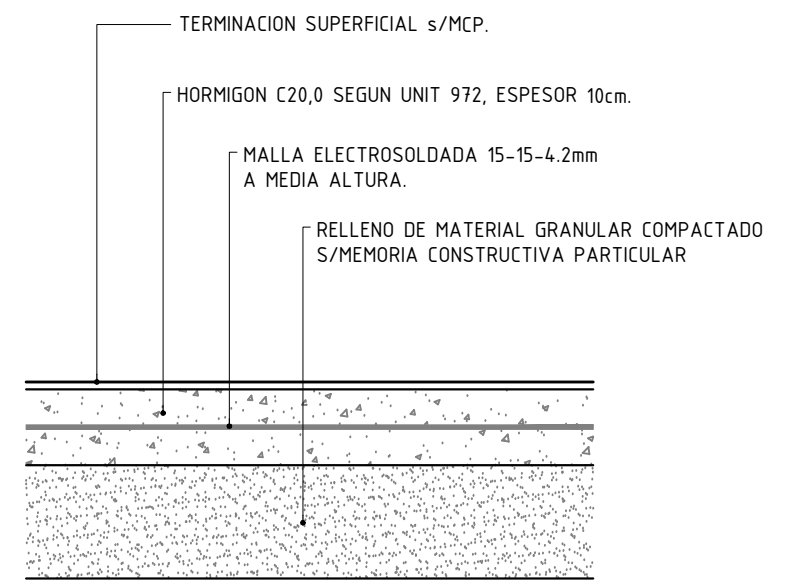
DETALLE TEJIDO
escala 1/25



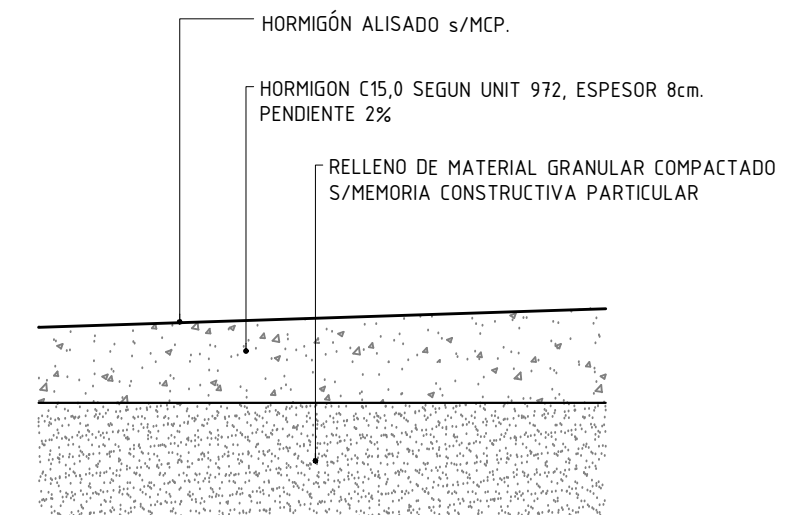
DETALLE BANCO
escala 1/20



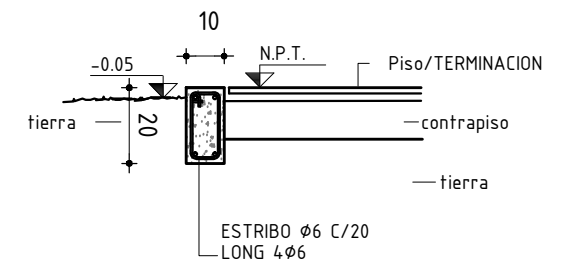
DETALLE PAVIMENTO - L8



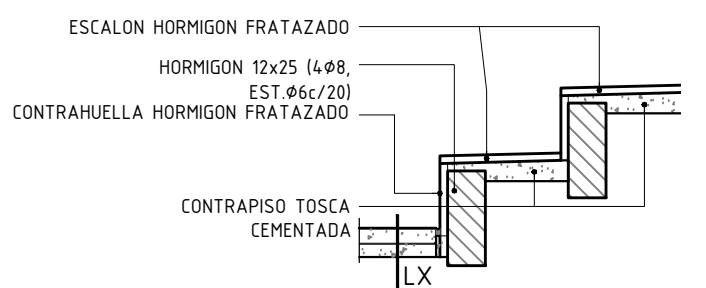
DETALLE DE VEREDA



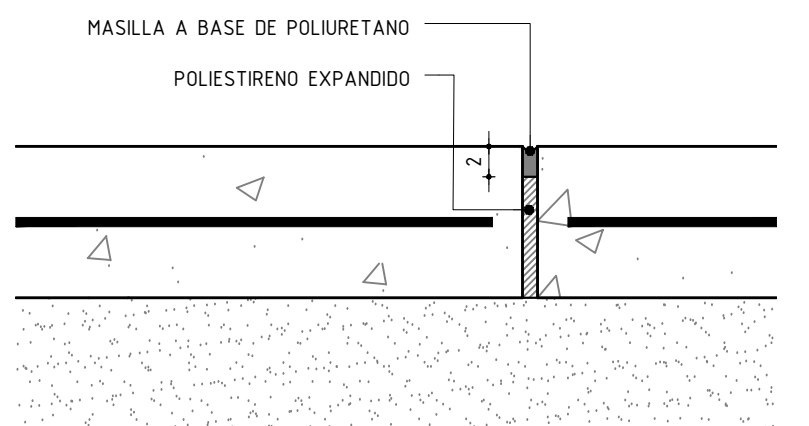
DETALLE CORDON



DETALLE ESCALONES
escala 1/20




DETALLE JUNTAS



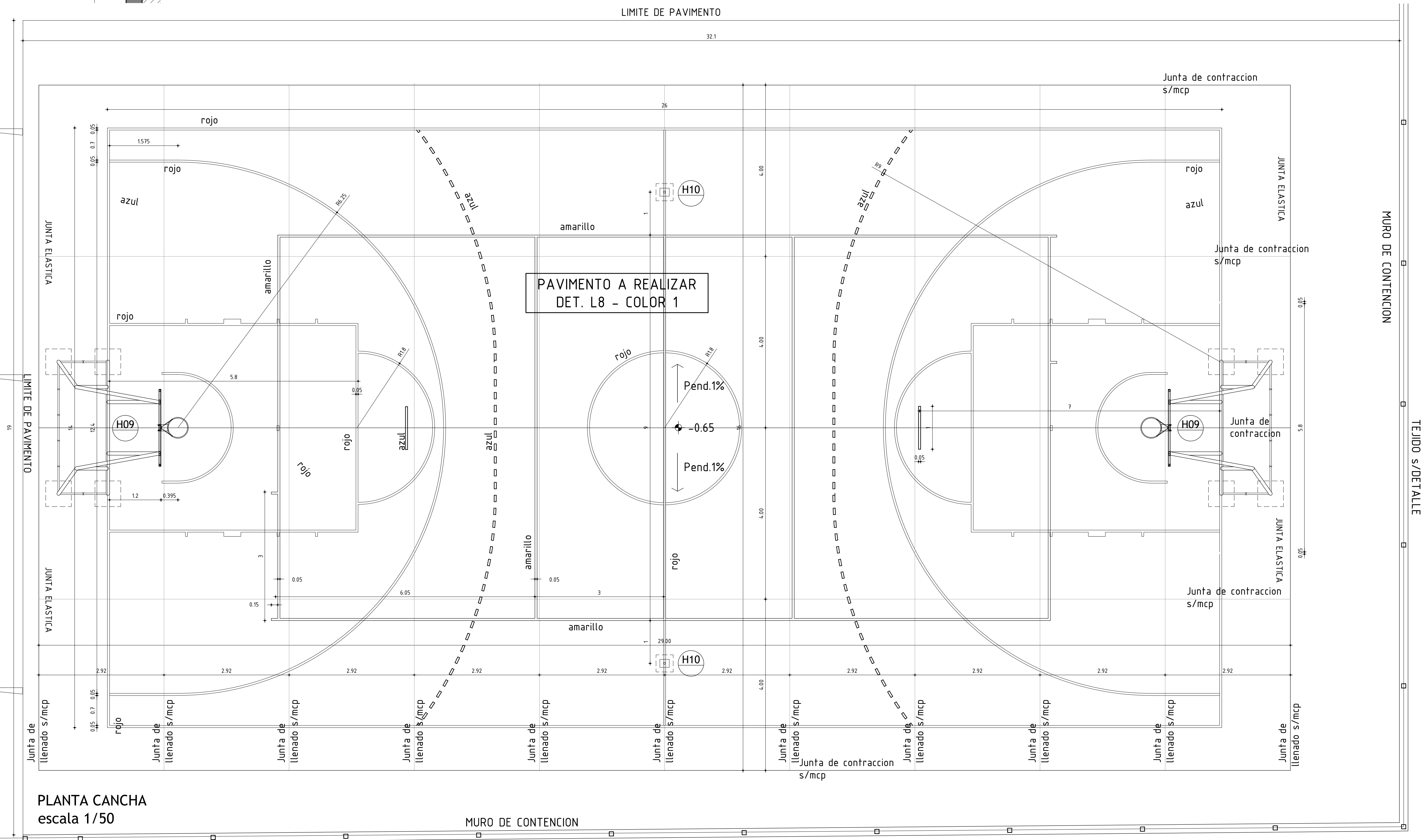
NOTA:

COLOR 1 = CEMENTO NATURAL
COLOR 2 = CEMENTO c/COLORANTE VERDE
SEGÚN MUESTRA - VER M.C.P.

	AREA DE PROYECTOS DIRECCION SECTORIAL DE INFRAESTRUCTURA CONSEJO DIRECTIVO CENTRAL		
	OBRA: ESCUELA TECNICA CALLE: LUIS ALBERTO DE HERRERA	LOCALIDAD: DEPARTAMENTO: PAIS: GUAYANA	FECHA: 21/09/2021 ESCALA: 1/500
PLANO DE: ALBANILERIA ESPACIOS EXTERIORES - DETALLES	LAMINA N°: 06		
ARQUITECTO: AYTE. DE ARQTO.: TECNICO DISEÑANTE:	FIRMA: G. COLOMBU P. BARRACHAN FIRMA:		

A2

TALUD NATURAL



PLANTA CANCHA
escala 1/50